

APPLYING FOR FUNDING – PREPARE YOUR APPLICATION

DEVELOP A PROBLEM TREE AND AN OBJECTIVE TREE

The Logical Framework Approach (LFA) for structuring the content of your project is highly recommended for external cooperation programmes and some programmes (INTERREG or European Fund for Refugees 2008-2013). To formalize your project above and fill in the table annexed to the application form (the «matrix» of the logical framework), you must identify the central problem of the action. This preparatory work can be done by constructing a problem tree and an objective tree.

SUMMARY

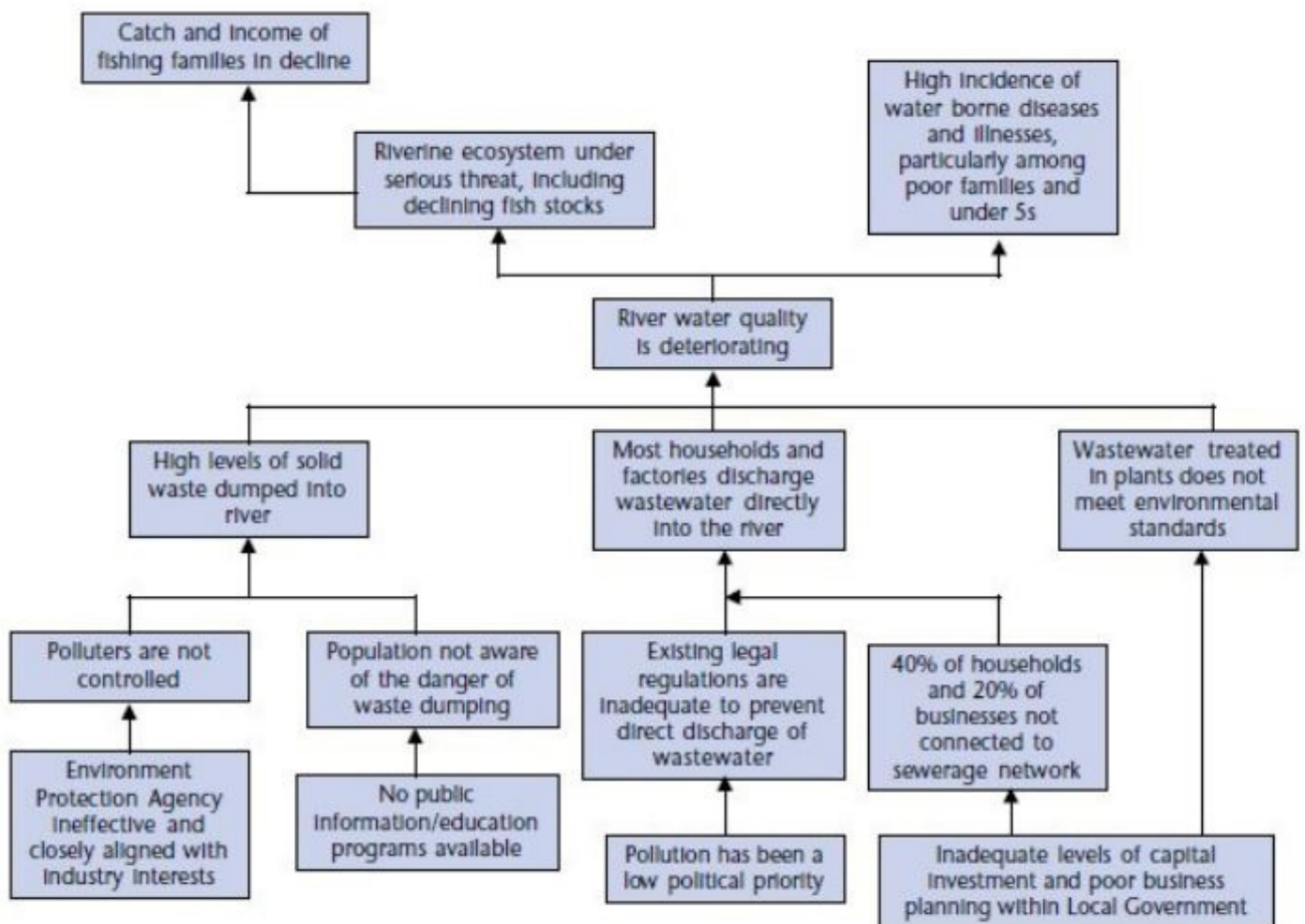
DEVELOPING THE "PROBLEM TREE"	2
DEVELOPING THE "OBJECTIVE TREE"	3

DEVELOPING THE "PROBLEM TREE"

The future actions directly or indirectly impact a range of stakeholders. What are the interests of these stakeholders in the implementation of the action? Do they have something to lose or gain? By gathering the advice of most of these stakeholders (at least the target groups and beneficiaries), through participatory brainstorming sessions or "workshops", you will succeed in determining a central problem that affects secondary problems (or consequences). These problems stem from direct causes, themselves derived from primary or indirect causes.

The results of this process can be presented as a «problem tree» (the causes are the tree's roots and the branches; the effects).

MODEL OF A PROBLEM TREE



Source : Europaid

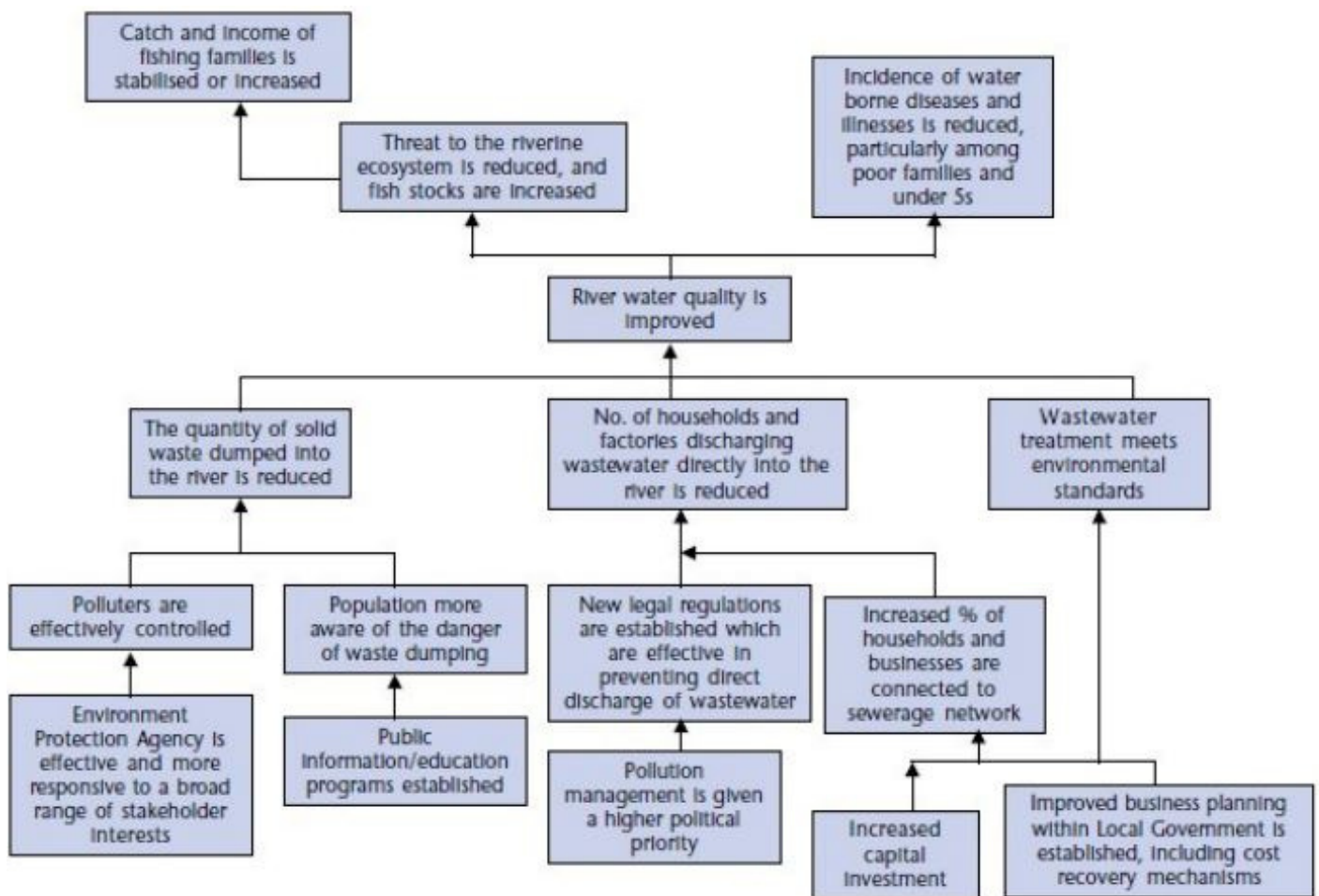
DEVELOPING THE "OBJECTIVE TREE"

The formulation of the problem is the first step towards the formulation of the project: in fact, a set of writing, you will manage to convert your tree problems «tree goal.»

Writings positively

- Your main problem is your specific goal,
- Consequences are your overall objectives,
- Your direct causes become the expected results
- Primary and indirect causes become your future actions (activities).

MODEL OF A PROBLEM TREE



Source : Europaid

WHO WE ARE?

Welcomeurope is a **private consulting firm specialised in European funds.**

For 20 years, Welcomeurope has been assisting **industrial players, associations and public entities** in order to optimise and secure their "public funds" approach.

Thanks to its experience and expertise, Welcomeurope is today identified as **the reference consulting firm in the field of European funding.**

FUNDING REVIEW

Do you need assistance in identifying the right opportunities for your projects?

Welcomeurope identifies the relevant funding programme for each of your projects.

The process takes place in three steps.

1. You provide us an outline of your project
2. We evaluate its consistency regarding available funds
3. We identify the right funding programme, we guide you in the project's optimal structuring, and we alert you in case of potential risks.

CONTACT

TRAINING SERVICE

training@welcomeurope.com

EUROFUNDING SERVICE

premium@welcomeurope.com

OTHERS REQUESTS

contact@welcomeurope.com